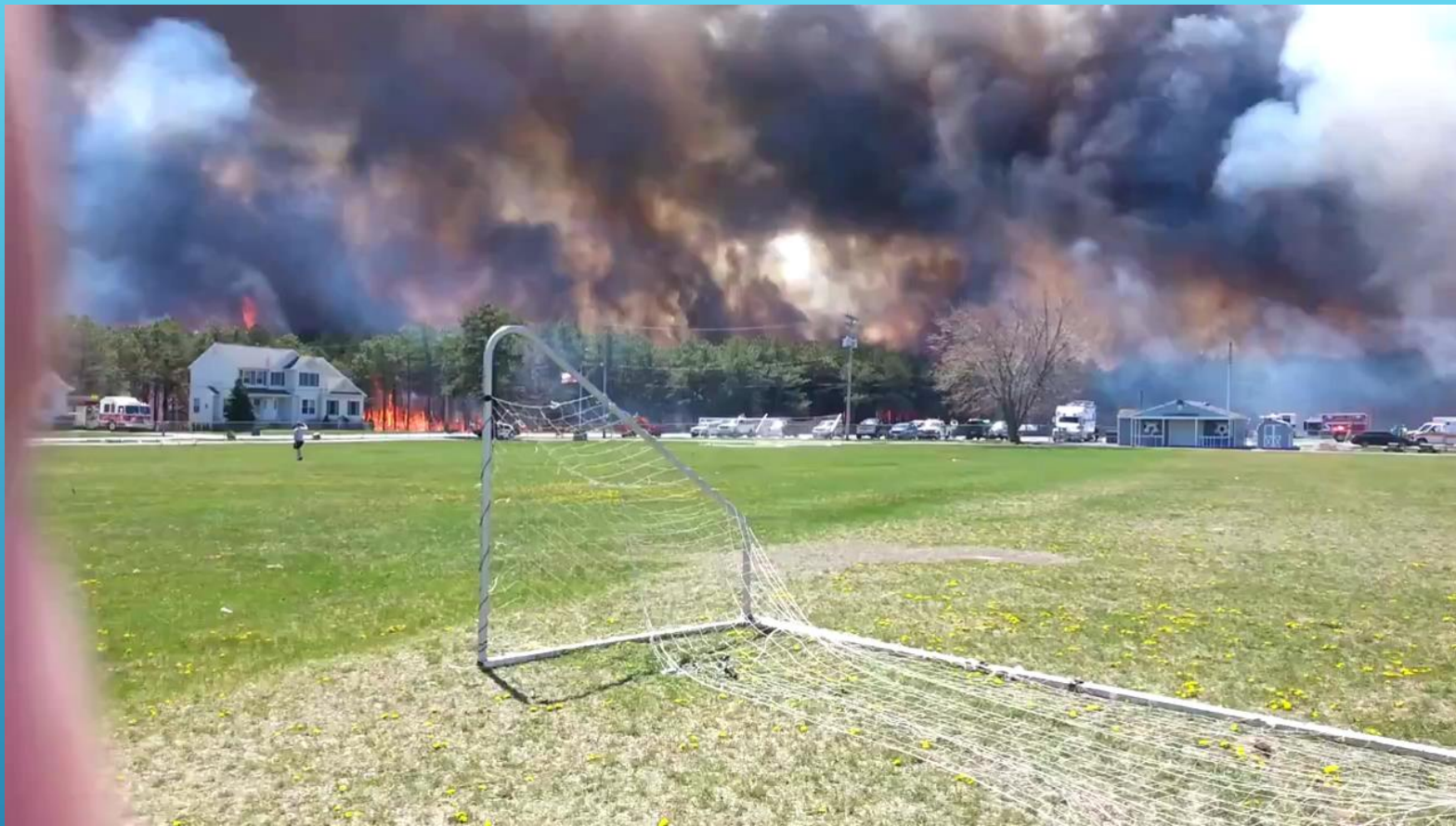


MONMOUTH COUNTY WUI TASKFORCE

IN COOPERATION WITH THE MONMOUTH
COUNTY FIRE MARSHAL'S OFFICE, VARIOUS
FIRE DEPARTMENTS, AND THE NEW JERSEY
FOREST FIRE SERVICE.



WUI FIRES REQUIRE MUCH DIFFERENT STRATEGIES AND TACTICS THEN TYPICAL STRUCTURAL FIRES.



THE USE OF THE INCIDENT COMMAND SYSTEM IS ESSENTIAL.

THESE INCIDENTS TEND TO REQUIRE A LARGE NUMBER OF APPARATUS, EQUIPMENT, AND MANPOWER.

ACCOUNTABILITY, AND TRACKING OF ALL RESOURCES IS MAJOR SAFETY ISSUE.



STAGING AREAS ARE NEEDED FOR CHECK IN AND ACCOUNTABILITY. IN ADDITION SOMETIMES INCIDENT FORMED STRIKE TEAMS OR TASKFORCES ARE NECESSARY.



WE TRY TO GIVE BRIEFINGS BEFORE DEPLOYMENTS. BRIEFINGS COULD BE HELD AT STAGING, OR ON A DIVISION.

ONE ENGINE PER
HOUSE!

DO NOT FIGHT THE
FIRE!

KEEP THE
IMPROVEMENTS
FROM BURNING.
HOLD YOUR
WATER.





UNITS CAN BE GROUPED INTO TASKFORCES, OR STRIKE TEAMS. EACH HAS A LEADER WHO SPEAKS FOR THE ENTIRE TASKFORCE OR STRIKE TEAM. COMMUNICATIONS TO THE NEXT LEVEL OF SUPERVISION IS DONE BY THE LEADER ONLY!



INCIDENT FORMED TASKFORCES CAN
INCLUDE AGENCIES/DEPARTMENTS FROM
VARIOUS PARTS OF THE STATE.



STRUCTURES ARE LOST MOSTLY DUE
TO EMBERS. HOLD YOUR WATER
UNTIL SOMETHING HOT LANDS ON
OR NEXT TO THE STRUCTURE



EVERY TASKFORCE HAS A WATER TENDER FOR RESUPPLY. DO NOT USE HYDRANTS! THEY ANCHOR YOU TO ONE POSITION. THIS A FIRE FIGHTER SAFETY ISSUE.

Wildfire in New Jersey

Defensible Space Works!

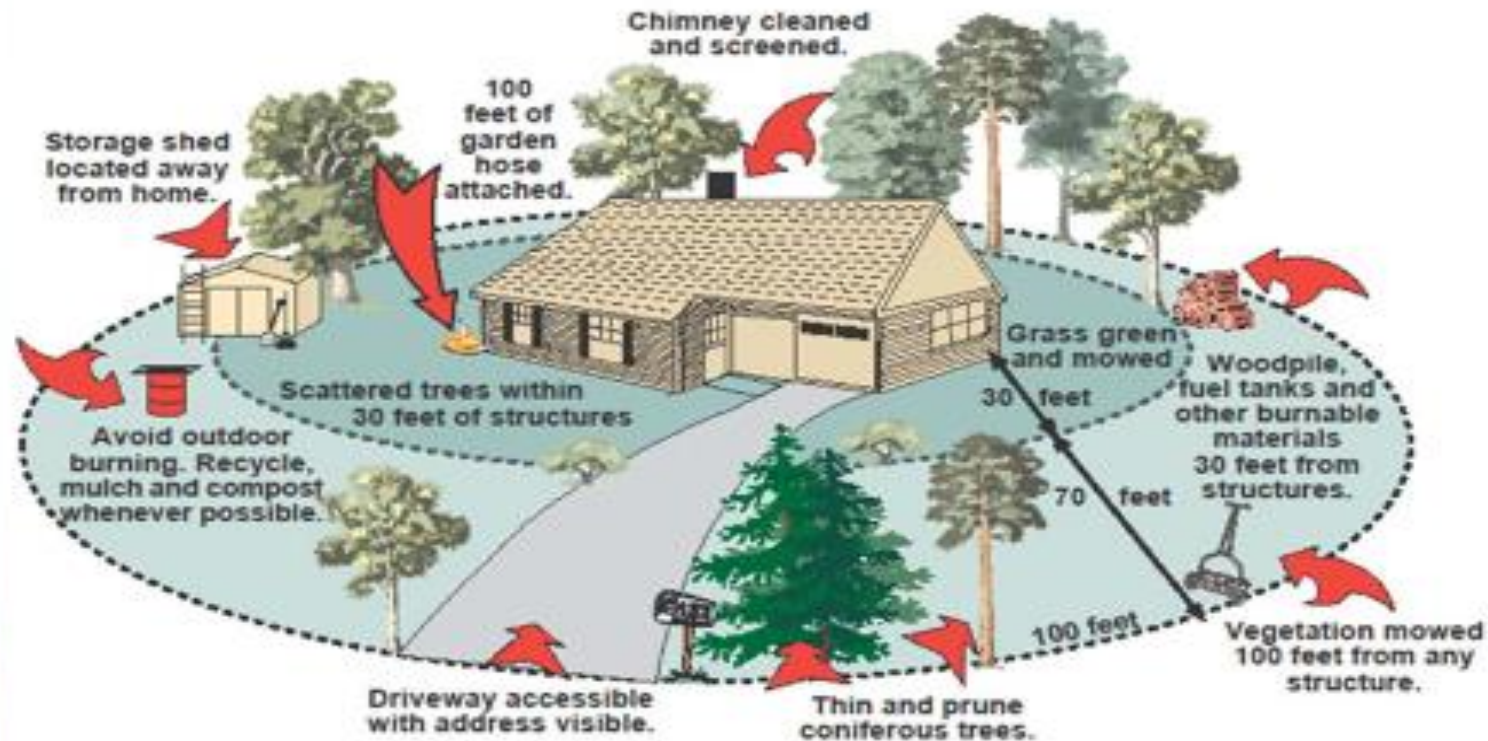


This Pinelands home also survived a wildfire. It has what it takes: 100' of defensible space.

Wildfire in New Jersey

Defensible Space

Protects Property & Firefighters





IN WILDLAND FIRE FIGHTING/WUI FIRES, WE TRY TO CONTAIN THE FIRE! WE MAY USE BACK FIRES OR BURN OUTS TO CONTAIN THE FIRE. THE USE OF HEAVY EQUIPMENT AND AIRCRAFT ARE FREQUENTLY USED AS WELL.



HEAVY EQUIPMENT
WIDE TRACK DOZER
TYPE 5 TRACTOR PLOW JD450
TYPE 2 DOZER JD750





FOREST FIRE SERVICE AIRCRAFT INCLUDE
FIXED WING AND HELICOPTERS.

SEATS 600-800 GALLONS OF WATER
HUEYS 300 GALLONS OF WATER



NJFFS HAS DEVELOPED BOTH FEDERAL
AGENCY AND CO-OP FIRE DEPARTMENT
TASKFORCES TO ASSIST AT COMPLEX
INCIDENTS

